

## Warwickshire Waste Partnership

18<sup>th</sup> June 2013

### Waste Data Overview for Q4 2013/14

#### Recommendations

- (1) The Waste Partnership is asked to note the provisional data for the 4th quarter, January to March 2014.

#### 1.0 Key Issues

- 1.1 Members of the Warwickshire Waste Partnership are presented with an estimate of waste and recycling figures at Disposal and Collection Authority level.

#### 2.0 Data Overview

- 2.1 This report contains a mixture of data taken from Waste Data Flow and from Warwickshire County Council in-house records and at the publication of this report are considered **provisional estimates**
- 2.2 The figures should be treated as provisional as data may be changed until all authorities data is approved by the EA and DEFRA through the Waste Data Flow System.

## Provisional Waste Management Data Quarter 4 2012/13

Figures are taken from Warwickshire County Council in-house records and at the publication of this report are considered **provisional estimates**.

### 1. Total Municipal Waste Arising and Disposal Route (Tonnes)

	January	February	March	Q4 Total	Q3 Total
<b>Total Tonnes</b>	<b>18,846</b>	<b>15,952</b>	<b>18,072</b>	<b>52,870</b>	<b>63,439</b>
<b>Landfilled</b>	4,463	2,717	3,310	10,490	15,152
<b>Inert - Landfilled</b>	0	0	0	0	0
<b>Energy from Waste</b>	5,431	4,055	3,594	13,080	14,575
<b>Other Technology*</b>	0	0	0	0	0
<b>In-vessel Composting*</b>	2,657	2,996	4,472	10,125	12,385
<b>Windrow Composting*</b>	234	221	502	957	1,687
<b>Other Composting*</b>	0	0	0	0	0
<b>Recycling (HWRC)</b>	1,782	1,527	1,702	5,011	4,552
<b>Recycling (WCA)</b>	3,904	4,072	3,889	11,865	13,859
<b>Reuse</b>	375	364	603	1,342	1,229

\*Other Technology – Refuse Derived Fuel

\*Windrow composting – Outdoor composting of green garden waste from HWRCs, NBBC and NWBC

\*In Vessel composting – Indoor controlled composting of garden and food waste from RBC, WDC, SDC

\*Other composting – Chipboard and wood

### 2. Percentage of Waste by Disposal Route

	January	February	March	Q4 Total	Q3 Total
% Recycling	30.2%	35.1%	30.9%	31.9%	29.0%
% Composting	15.3%	20.2%	27.6%	21.0%	22.2%
% Reuse	2.0%	2.3%	3.3%	2.5%	1.9%
Total	47.5%	57.6%	61.8%	55.4%	53.1%

% Landfill	23.7%	17.0%	18.3%	19.9%	23.9%
% Energy from Waste and RDF	28.8%	25.4%	19.9%	24.7%	23.0%
Total	52.5%	42.4%	38.2%	44.6%	46.9%

\*

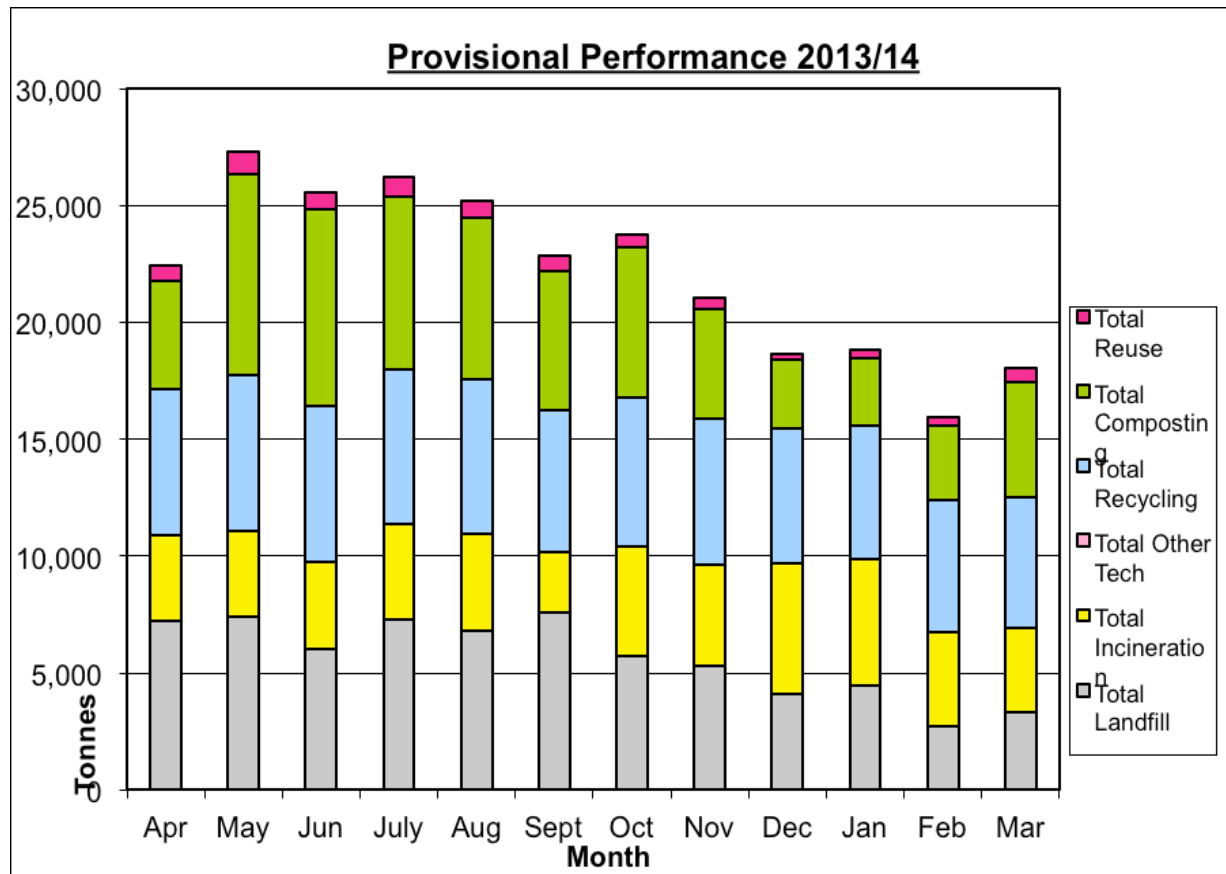
### 3. Estimated Provisional Performance

	<b>Q4 2012/2013</b>	<b>Q4 2013/2014</b>	<b>Change</b>
Recycling/Reuse Rate	18,667 tonnes	18,218 tonnes	<i>X 449 tonnes down</i>
	<b>32.5%</b>	<b>34.5%</b>	<i>☺ 2% up</i>
Composting Rate	7,600 tonnes	11,082 tonnes	<i>☺ 3,482 tonnes up</i>
	<b>13.2%</b>	<b>21.0%</b>	<i>☺ 7.8% up</i>
Recycling, Composting and Reuse Rate	26,267 tonnes	29,300 tonnes	<i>☺ 3,033 tonnes up</i>
	<b>45.7%</b>	<b>55.5%</b>	<i>☺ 9.7% up</i>
Landfill Rate	20,412 tonnes	10,490 tonnes	<i>☺ 9,922 tonnes down</i>
	<b>35.5%</b>	<b>19.8%</b>	<i>☺ 15.7% down</i>
Energy from Waste	10,834 tonnes	13,080 tonnes	<i>☺ 2,246 tonnes up</i>
	<b>18.8%</b>	<b>24.7%</b>	<i>☺ 5.9% up</i>
<b>Total Municipal Waste</b>	<b>57,513 tonnes</b>	<b>52,870 tonnes</b>	<i>☺ 4,643 tonnes down</i>
			<i>☺ 8.1% down</i>

### 4. Comparison of Yearly figures 2012/13 to 2013/14

	<b>2012/13 Year</b>	<b>2013/14 Year</b>	<b>Change</b>
Recycling/Reuse Rate	75,399 tonnes	76,080 tonnes	<i>☺ 681 tonnes up</i>
	<b>27.9%</b>	<b>28.2%</b>	<i>☺ 0.3% up</i>
Composting Rate	66,166 tonnes	68,592 tonnes	<i>☺ 2,426 tonnes up</i>
	<b>24.4%</b>	<b>25.5%</b>	<i>☺ 1.1% up</i>
Recycling, Composting and Reuse Rate	141,565 tonnes	144,672 tonnes	<i>☺ 3,107 tonnes up</i>
	<b>52.3%</b>	<b>53.7%</b>	<i>☺ 1.4% up</i>
Landfill Rate	87,412 tonnes	71,066 tonnes	<i>☺ 16,346 tonnes down</i>
	<b>32.4%</b>	<b>26.4%</b>	<i>☺ 6.0% down</i>
Energy from Waste	41,194 tonnes	53,567 tonnes	<i>☺ 12,373 tonnes up</i>
	<b>15.3%</b>	<b>19.9%</b>	<i>☺ 4.6% up</i>
<b>Total Municipal Waste</b>	<b>270,171 tonnes</b>	<b>269,305 tonnes</b>	<i>☺ 866 tonnes down</i>
			<i>☺ 0.3% down</i>

NB. District recycling rates are taken from claimed recycling credits. Last years figures are taken from Waste Data Flow. All other figures are taken from Warwickshire County Council in-house records and at the publication of this report are considered **provisional estimates**.



## 5. District Provisional Performance – Household waste

Note: Figures are from the Waste Management System and not Waste Data Flow therefore WCA reporting differences will exist.

	North Warwickshire		Nuneaton and Bedworth		Rugby		Stratford		Warwick	
	Year 2012/13	Year 2013/14	Year 2012/13	Year 2013/14	Year 2012/13	Year 2013/14	Year 2012/13	Year 2013/14	Year 2012/13	Year 2013/14
Recycling Rate	3,748 tonnes	3,948 tonnes	10,587 tonnes	10,261 tonnes	10,237 tonnes	9,591 tonnes	14,306 tonnes	14,131 tonnes	12,674 tonnes	12,924 tonnes
	14%	15%	23%	22%	25%	23%	27%	27%	26%	27%
Composting Rate	5,384 tonnes	6,462 tonnes	10,255 tonnes	11,865 tonnes	10,609 tonnes	10,852 tonnes	17,301 tonnes	17,419 tonnes	14,711 tonnes	14,331 tonnes
	20%	24%	22%	25%	26%	26%	33%	34%	31%	30%
Recycling, Composting and Reuse Rate	9,152 tonnes	10,410 tonnes	20,812 tonnes	22,126 tonnes	20,846 tonnes	20,413 tonnes	31,607 tonnes	31,550 tonnes	27,385 tonnes	27,255 tonnes
	34%	39%	45%	47%	51%	49%	60%	61%	57%	57%
Residual	18,018 tonnes	16,492 tonnes	25,503 tonnes	25,028 tonnes	20,563 tonnes	20,601 tonnes	20,827 tonnes	20,192 tonnes	20,646 tonnes	20,011 tonnes
	66%	61%	55%	53%	49%	51%	40%	39%	43%	43%
Total	27,170 tonnes	26,902 tonnes	46,315 tonnes	47,154 tonnes	41,409 tonnes	41,014 tonnes	52,434 tonnes	51,742 tonnes	48,031 tonnes	47,566 tonnes